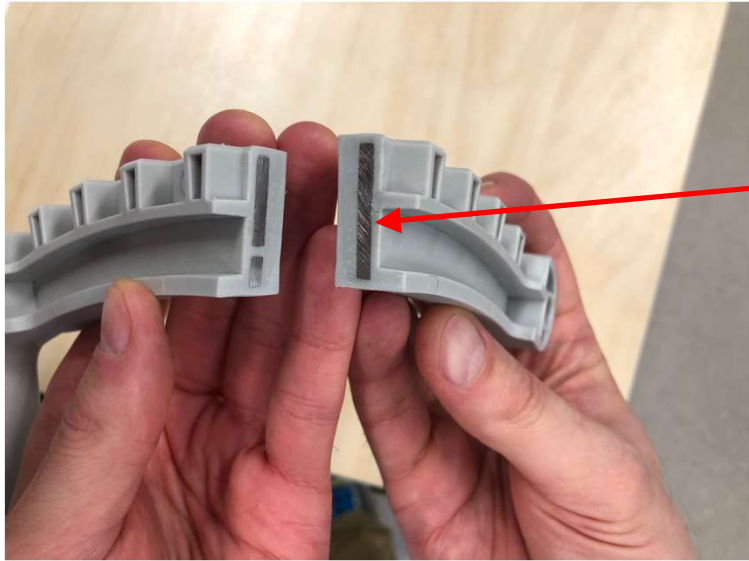
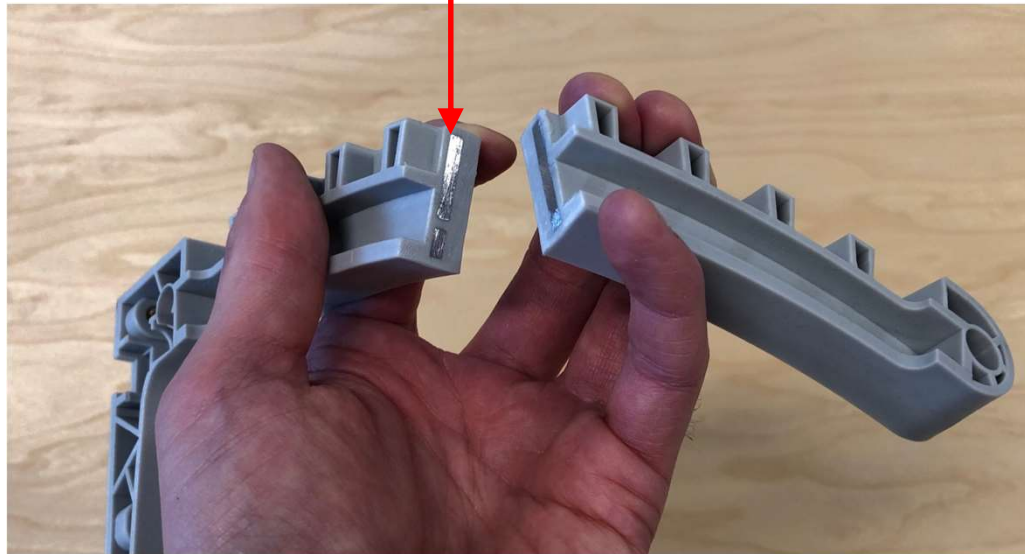
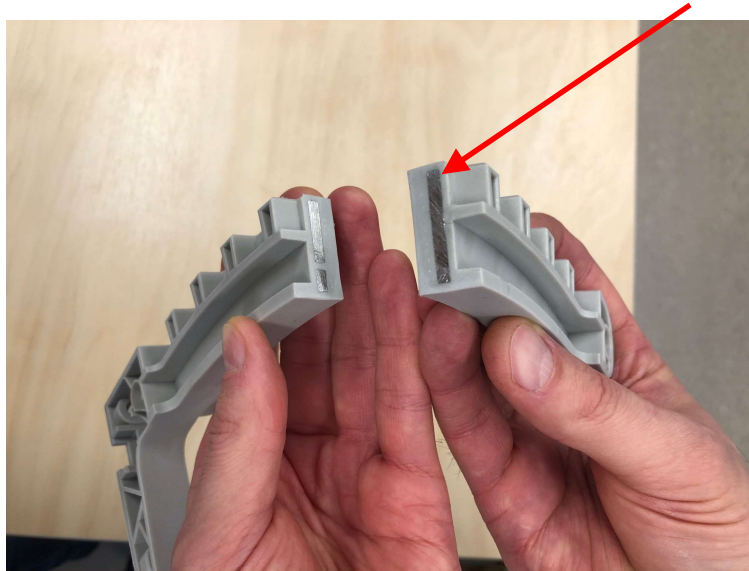


Stress Tests and Mechanical Strenght of Remoran Wave 3

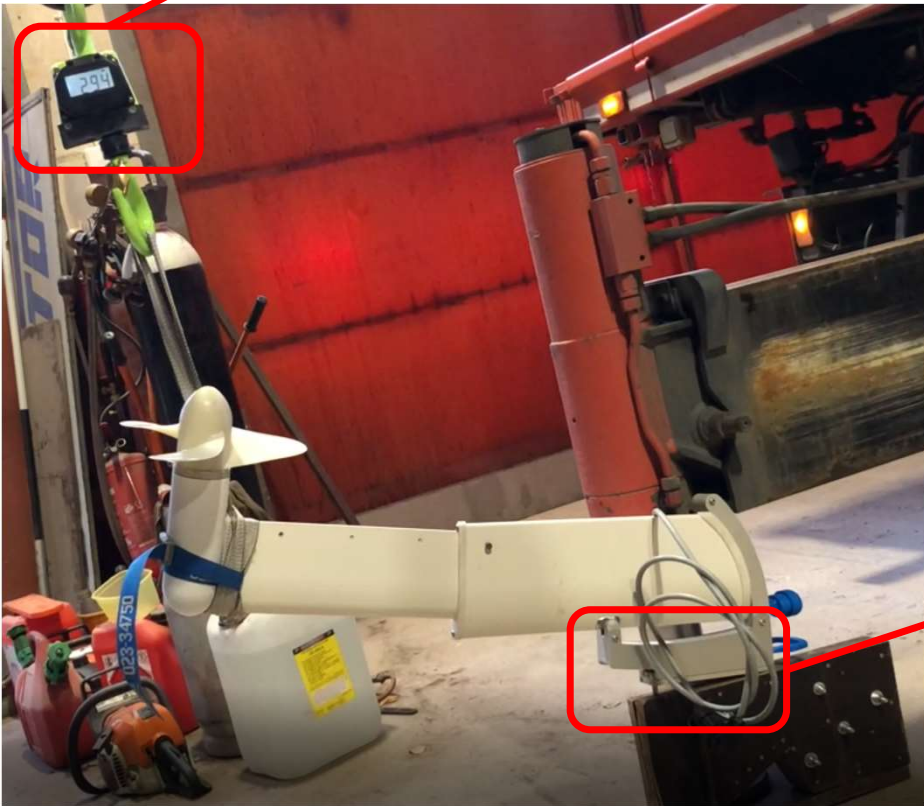


The critical plastic parts are molded over a stainless steel core and the actual plastic is reinforced with fibers to ensure high mechanical durability and strenght.





Limit of mechanical fuse – 168 kg
Test was performed with a crane
and the outboard unit fully
extended. Actual fuse threshold on
a partially extended unit is higher.



Overall mechanical endurance of the outboard generator unit exceeds 294 kgs, which was the limit of test setup as the screws used to attach the rail to a block of plywood came loose. The outboard unit itself suffered no damages and remained fully operational after the testing. The only event was the triggering of the mechanical fuse as intended.

